

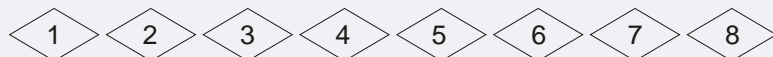
KOFLow

GATE VALVE SERIES

01-31P

FIGURE NUMBER SYSTEM

Steel Gate Valve Figure Number System



1	Size	xxin; xx, mm					
2	Operation type	1-Bare Stem	2-Chain-Wheel Operated	4-Spur Gear Operated	5-Cone Gear Operated	9-Electric Operated	Manual Operated (omit)
3	Valve Type	Z- Gate Valve					
4	Pressure	0-PN1.0	1-PN1.6 CLASS150	2-PN2.5	3-CLASS300	4-PN4.0 CLASS400	6-PN6.4 CLASS600
		9-CLASS900	10-PN10.0	15-CLASS1500	16-PN16.0	20-PN20.0	25-CLASS2500
5	Connection Ends	RF-Raised Face	FF-Flat Face	MFM-Male and Female Face	TG-Tongue and Groove Face	RJ-Ring Joint	BW-Buttweld
6	Structure Type	0-Flexible Wedge	1-Solid Wedge	2-Solid Double Wedge	3-Parellel Single Disc 3T-Adjust Type 3L-Adiversion Hole Type		4-Parellel Double Disc
7	Basic Material	C-WCB	C5-C5	C6-WC6	C9-WC9	BL-LCB	CL-LCC
		8-CF8	8M-CF8M	3-CF3	3M-CF3M	ML-MONEL	
8	Material of Seat face or Liner	H-Cr13 Cr13 S.S		E-18-8 18-8 S.S		R-Mo2Ti Mo2Ti S.S	
		D- Nitriding Steel		M- Monel Alloy		Y- Stellite	

Note:

- 1、 Use "W" to express seat sealing surface material which is processed directly by valve body.
- 2、 When the materials of sealing surface are different, use low hardness material symbol to express.
- 3、 Special requirements not shown ,should be indicated in the purchase order
- 4、 The models listed in the sample book have no reference to pressure、 sizes and valve material symbols, they are to be decided by users.

For example:

10 " -5Z1RF0CH

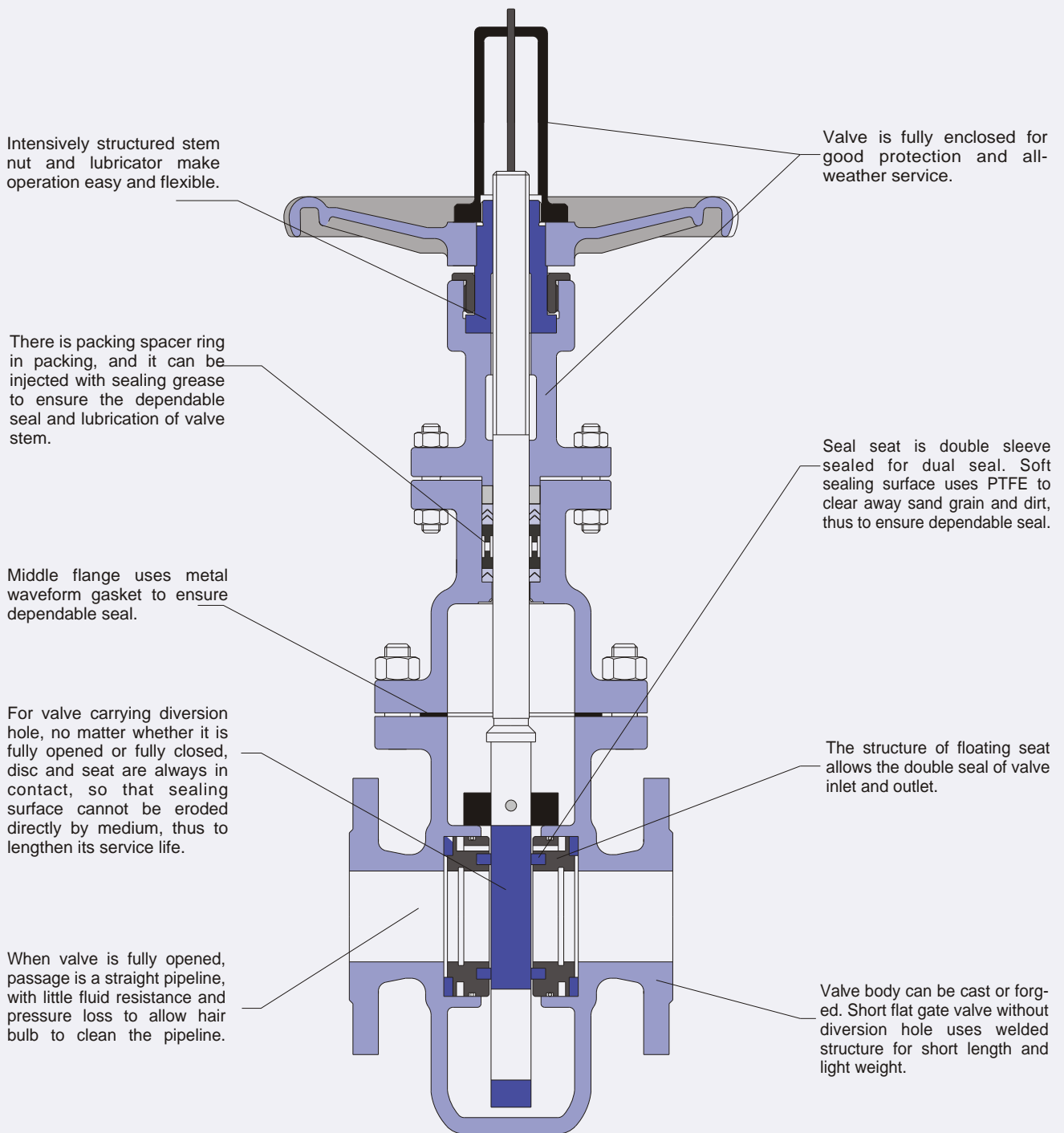
Gate valve, 10 " ANSI CLASS150, Raised Face Ends, Flexible wedge, Body&Bonnet&Wedge Cast Steel WCB, Seat sealing face material 13Cr Cone Gear operated

80-Z2RF08W

Gate valve, DN80 PN25, Raised Face Ends, Flexible wedge, Body&Bonnet& Wedge Stainless Steel CF8, Seat sealing face Body machined, Handwheel operated

PARALLEL SINGLE DISC GATE VALVE

Design characteristics of Parallel Single Disc Gate Valve



Remark:

- 1、 Type of end connection referred to Appendix I
- 2、 Type of disc structure referred to Appendix II
- 3、 Valve operation referred to Appendix VI

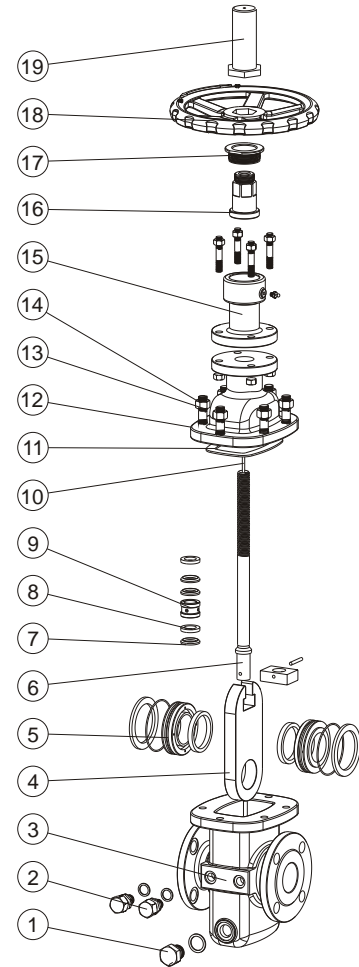
PARALLEL SINGLE DISC GATE VALVE

Materials list for Parallel Single Disc Gate Valve

No.	Part Name	Ordinary Type		Anti-sulphur Type	
		ASTM	GB	ASTM	GB
1	Blown down Stopple	A276-420	2Cr13	A276-304	1Cr18Ni9
2	Grease injection joint	A105	25	A105	25
3	Body	A216-WCB	WCB	A216-WCB	WCB
4	Gate disc	A182-F6a	1Cr13	A182-F304	1Cr18Ni9
5	Seat	A105+ F4+NBR	25+F4+NBR	A182-F304 +F4+FPM	1Cr18Ni9+ F4+FPM
6	Stem	A276-410	1Cr13	A276-304	1Cr18Ni9
7	Lower Packing	F4	F4	F4	F4
8	Lantern ring	A276-420	2Cr13	A276-420	2Cr13
9	Upper Packing	F4	F4	F4	F4
10	Indicating Finger	A276-420	2Cr13	A276-420	2Cr13
11	Gasket	Graphite +Stainless Steel			
12	Bonnet	A216-WCB	WCB	A216-WCB	WCB
13	Stud	A193-B7	35CrMoA	A193-B7	35CrMoA
14	Nut	A194-2H	35	A194-2H	35
15	Yoke	A216-WCB	WCB	A216-WCB	WCB
16	Stem Nut	ZQA19-4	B148 C95600	ZQA19-4	B148 C95600
17	Stem Nut Retainer	25	A108 1020	25	A108 1020
18	Handwheel	QT400-17	A197	QT400-17	A197
19	Indicating Cover	25	A108 1020	25	A108 1020

Remark:

1. Select different materials for different working temperature and media
2. Trim materials and recommended service coverage referred to Appendix VII



Torque Table

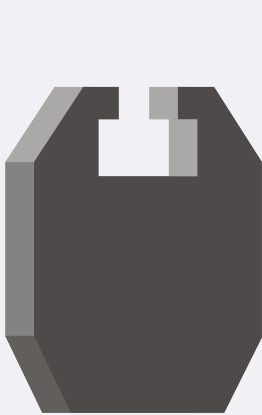
The torque values listed in the following table have not been measured in practice but only serve as reference for selecting the actuator. The medium characteristics, internal parts and valve opening frequency remain to be taken into account as extra factors.

Size (DN)	Pressure(MPa)							N.m
	PN1.6-2.5 Class150	PN4.0 Class300	PN6.4	Class400	PN10.0 Class600	PN16.0 Class900	PN1.6-2.5 Class150	
40	14	16	19	19	24	33	/	
50	15	18	24	24	30	54	/	
65	31	38	51	51	67	102	/	
80	38	54	66	66	90	115	/	
100	46	73	90	90	130	139	46	
150	60	90	156	156	182	318	60	
200	110	142	228	228	245	590	110	
250	162	224	368	368	367	785	162	
300	222	281	550	550	980	997	222	
350	310	443	630	630	1118	1040	310	
400	440	565	870	870	1618	1245	440	
450	560	760	980	980	2160	1451	560	
500	700	950	1208	1208	2810	1966	700	
600	1010	1510	2150	2150	/	3611	1010	
700	1560	2300	/	/	/	/	1560	
800	2150	3170	/	/	/	/	2150	
900	2910	4450	/	/	/	/	2910	
1000	3920	/	/	/	/	/	3920	

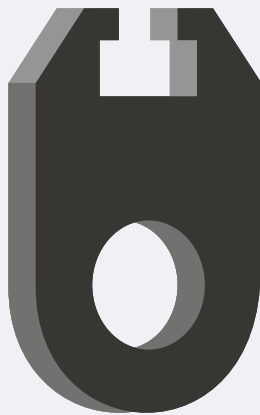
PARALLEL SINGLE DISC GATE VALVE

Flow Charalteristic

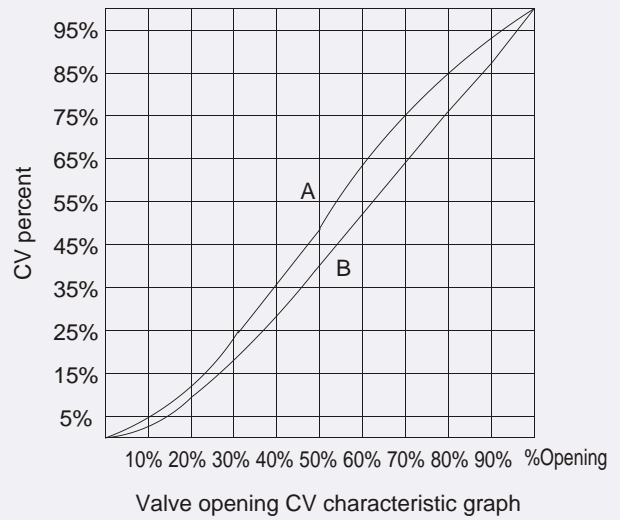
The flow characteristic of flat gate valves with a diversion hole is equal to that of pipelines of the same specification. The characteristic is shown in per centum form. As for valves without a diversion hole, its cavity fly span is smaller than that of wedge gate valves and it is a regular cylindrical object, therefore, characteristics of the valves are similar except that they have a larger pressure lose. Besides, their flux adjustment behavior is better than that of the ones with a diversion hole.



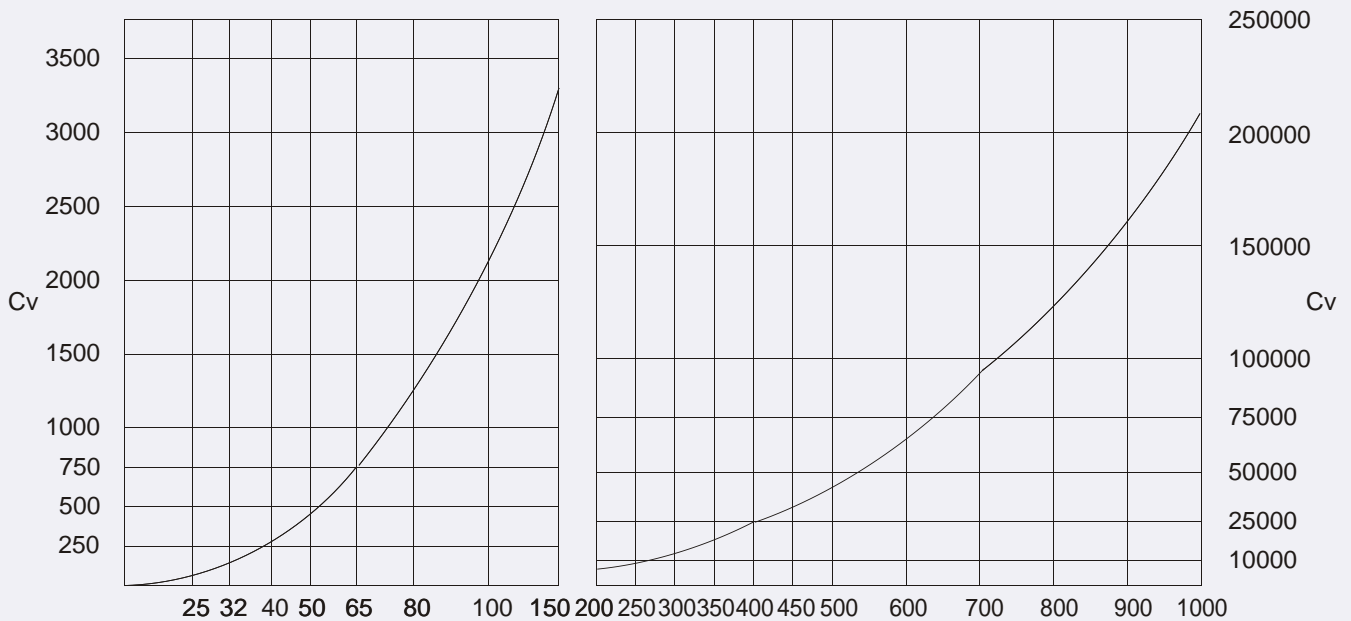
Ordinary Type



Diversion hole Type



DN-CV Graph of Flat Valves With a Diversion Hole



PARALLEL SINGLE DISC GATE VALVE

Parallel Single Disc Gate Valve Product Line

Operation type	DN	25	32	40	50	65	80	100	125	150	200	250	300	350	400	450	500	600	650	700	750	800	900	1000				
	NPS	1	1-1/4	1-1/2	2	2-1/2	3	4	5	6	8	10	12	14	16	18	20	24	26	28	30	32	36	40				
Hand operated	CLASS	150	*	*	*	*	*	*	*	*	*	*	*	*	*	*	*	*	*									
		300	*	*	*	*	*	*	*	*	*	*	*	*	*	*	*	*	*	*								
		400	*	*	*	*	*	*	*	*	*	*	*	*	*	*	*	*	*	*								
		600	*	*	*	*	*	*	*	*	*	*	*	*	*	*	*	*	*	*	*							
		900	*	*	*	*	*	*	*	*	*	*	*	*	*	*	*	*	*	*	*							
	PN	1.6	*	*	*	*	*	*	*	*	*	*	*	*	*	*	*	*	*	*	*							
		2.5	*	*	*	*	*	*	*	*	*	*	*	*	*	*	*	*	*	*	*	*						
		4.0	*	*	*	*	*	*	*	*	*	*	*	*	*	*	*	*	*	*	*	*						
		6.4	*	*	*	*	*	*	*	*	*	*	*	*	*	*	*	*	*	*	*	*	*					
		10.0	*	*	*	*	*	*	*	*	*	*	*	*	*	*	*	*	*	*	*	*	*					
16.0	*	*	*	*	*	*	*	*	*	*	*	*	*	*	*	*	*	*	*	*	*							
Gear operated	CLASS	150									*	*	*	*	*	*	*	*	*									
		300										*	*	*	*	*	*	*	*	*								
		400									*	*	*	*	*	*	*	*	*	*	*							
		600							*	*	*	*	*	*	*	*	*	*	*	*	*	*						
		900						*	*	*	*	*	*	*	*	*	*	*	*	*	*	*	*					
	PN	1.6										*	*	*	*	*	*	*	*	*	*							
		2.5										*	*	*	*	*	*	*	*	*	*	*						
		4.0										*	*	*	*	*	*	*	*	*	*	*						
		6.4									*	*	*	*	*	*	*	*	*	*	*	*	*					
		10.0						*	*	*	*	*	*	*	*	*	*	*	*	*	*	*	*					
16.0					*	*	*	*	*	*	*	*	*	*	*	*	*	*	*	*	*							
Electric operated	CLASS	150			*	*	*	*	*	*	*	*	*	*	*	*	*	*	*	*	*	*	*	*	*	*	*	
		300			*	*	*	*	*	*	*	*	*	*	*	*	*	*	*	*	*	*	*	*	*	*	*	
		400			*	*	*	*	*	*	*	*	*	*	*	*	*	*	*	*	*	*	*	*	*	*	*	
		600			*	*	*	*	*	*	*	*	*	*	*	*	*	*	*	*	*	*	*	*	*	*	*	
		900			*	*	*	*	*	*	*	*	*	*	*	*	*	*	*	*	*	*	*	*	*	*	*	
	PN	1.6			*	*	*	*	*	*	*	*	*	*	*	*	*	*	*	*	*	*	*	*	*	*	*	
		2.5			*	*	*	*	*	*	*	*	*	*	*	*	*	*	*	*	*	*	*	*	*	*	*	
		4.0			*	*	*	*	*	*	*	*	*	*	*	*	*	*	*	*	*	*	*	*	*	*	*	
		6.4			*	*	*	*	*	*	*	*	*	*	*	*	*	*	*	*	*	*	*	*	*	*	*	
		10.0			*	*	*	*	*	*	*	*	*	*	*	*	*	*	*	*	*	*	*	*	*	*	*	
16.0			*	*	*	*	*	*	*	*	*	*	*	*	*	*	*	*	*	*	*	*	*	*	*			

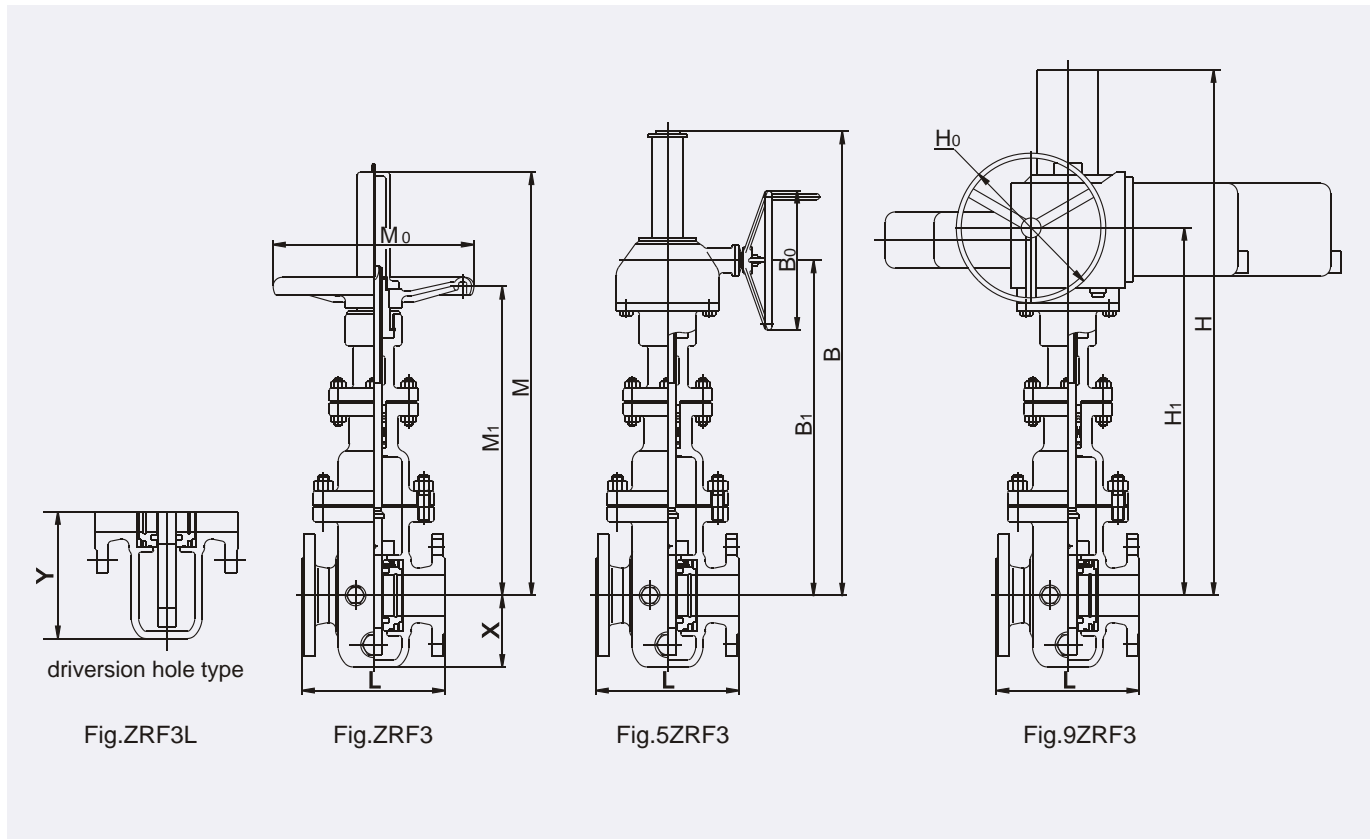
For sizes and classes not shown, please contact our Sales Department

Technical Specification

Design Reference	API							GB						
Design Standard	API6D							JB/T5298						
Pressure-Temperature Rating	ASME B16.34							GB/T12221						
Face-Face	API6D							GB/T12221、JB/T5298、GB/T15188.1						
Flange Ends	ASME B16.5、ASME B16.47							GB/T9113、JB/T79						
Buttwelding Ends	ASME B16.25							GB/T12224						
Inspection & Test	API6D							JB/T9092						
Test Pressure	Normal Pressure	CL150	CL300	CL400	CL600	CL900	PN1.6	PN2.5	PN4.0	PN6.4	PN10.0	PN16.0		
	Shell Test	2.93	7.58	10.0	15.0	22.4	2.4	3.75	6.0	9.6	15.0	24.0		
	High Pressure Seal Test	2.07	5.52	7.31	11.03	16.54	1.76	2.75	4.4	7.04	11.0	17.6		
	Low Pressure Seal Test	0.6												

PARALLEL SINGLE DISC GATE VALVE

Pressure:PN1.6~10.0/CLASS150~900



Main Dimensions & Weight

CLASS150 PN1.6、2.5

Size		L(RF)	L(BW)	Manual Operated			Gear-driven			Electric			X	Y	Weight(kg)	
mm	in.			M	M ₁	M ₀	B	B ₁	B ₀	H	H ₁	H ₀			BW	RF
25	1	127	127	278	220	200	-	-	-	-	-	-	60	90	-	-
32	1-1/4	140	140	350	270	200	-	-	-	-	-	-	70	105	-	-
40	1-1/2	165	165	435	335	250	-	-	-	-	-	-	75	115	-	-
50	2	178	216	475	360	250	-	-	-	690	572	200	80	122	48	54
65	2-1/2	190	241	535	425	300	-	-	-	747	637	200	90	152	59	70
80	3	203	283	600	460	300	-	-	-	812	672	200	100	178	63	73
100	4	229	305	700	535	350	-	-	-	960	795	508	110	220	73	85
150	6	267	403	910	685	350	-	-	-	1170	945	508	145	345	158	180
200	8	292	419	1095	815	350	1235	900	305	1355	1075	508	170	420	264	300
250	10	330	457	1370	965	450	1510	1050	305	1630	1095	305	210	495	290	329
300	12	356	502	1470	1100	500	1610	1185	305	1730	1230	305	240	600	400	455
350	14	381	572	1730	1250	600	1890	1345	458	2020	1417	305	265	640	619	704
400	16	406	610	1870	1375	650	2030	1470	458	2160	1532	305	290	720	869	987
450	18	432	660	2185	1485	700	2415	1625	458	2500	1651	305	325	798	1115	1267
500	20	457	711	2335	1575	800	2565	1715	458	2650	1741	305	360	875	1435	1631
600	24	508	813	2815	1995	1000	3045	2135	458	3130	2161	457	425	1250	2310	2625
700	28	610	914	-	-	-	-	-	-	3630	2470	457	455	1250	3203	3640
800	32	660	965	-	-	-	-	-	-	4135	2933	610	505	1370	4540	5159
900	36	711/813*	1016	-	-	-	-	-	-	4605	3260	610	545	1500	6209	7056
1000**	40	811	-	-	-	-	-	-	-	5140	3645	610	610	1670	7293	8288

Note: * Size 813 is only the structural length for CLASS 150.

** No such specifications for pipeline valve of CLASS150.

*** TIAN'ERTONG electric device, with models to users' requests.

****The weight listed is that of bare stem150Lb, no diversion hole and not including drive unit.

PARALLEL SINGLE DISC GATE VALVE

Pressure:CLASS150~900/PN1.6~10.0

Main Dimensions & Weight

CLASS300 PN4.0

Size		L(RF)	L(BW)	Manual Operated			Gear-driven			Electric			X	Y	Weight(kg)	
mm	in.			M	M ₁	M ₀	B	B ₁	B ₀	H	H ₁	H ₀			BW	RF
25	1	165	165	280	220	200	-	-	-	-	-	-	60	90	-	-
32	1-1/4	178	178	350	270	200	-	-	-	-	-	-	70	105	-	-
40	1-1/2	190	190	435	335	250	-	-	-	-	-	-	75	115	-	-
50	2	216	216	475	360	250	-	-	-	690	572	200	80	122	51	54
65	2-1/2	241	241	535	425	300	-	-	-	747	637	200	90	152	62	70
80	3	283	283	600	460	300	-	-	-	860	720	508	100	178	66	73
100	4	305	305	700	535	350	-	-	-	960	795	508	110	220	78	90
150	6	403	403	910	685	350	-	-	-	1170	945	508	145	345	159	180
200	8	419	419	1095	815	350	1235	900	305	1355	945	305	170	420	266	300
250	10	457	457	1370	965	450	1510	1050	305	1630	1095	305	210	495	416	470
300	12	502	502	1470	1100	500	1610	1185	305	1760	1257	305	240	600	576	650
350	14	762	762	1730	1250	600	1890	1345	458	2020	1407	305	265	640	890	1005
400	16	838	838	1870	1375	650	2030	1470	458	2185	1541	305	290	720	1260	1410
450	18	914	914	2185	1485	700	2415	1625	458	2500	1651	305	325	798	1620	1810
500	20	991	991	2335	1575	800	2545	1715	458	2695	1757	457	360	875	2110	2330
600	24	1143	1143	2815	1995	1000	3045	2135	458	3175	2177	457	425	1170	3410	3750
700	28	1346	1346	-	-	-	-	-	-	3670	2606	610	455	1250	4715	5200
800	32	1524	1524	-	-	-	-	-	-	4136	2933	610	505	1370	6690	7370
900	36	1727	1727	-	-	-	-	-	-	4673	3317	610	545	1500	9230	10080

PN6.4

Size		L(RF)	L(BW)	Manual Operated			Gear-driven			Electric			X	Y	Weight(kg)	
mm	in.			M	M ₁	M ₀	B	B ₁	B ₀	H	H ₁	H ₀			BW	RF
25	1	216	216	295	230	200	-	-	-	-	-	-	66	100	-	-
32	1-1/4	229	229	368	285	200	-	-	-	-	-	-	77	116	-	-
40	1-1/2	241	241	457	352	250	-	-	-	-	-	-	83	127	-	-
50	2	250	292	499	378	250	-	-	-	723	601	200	88	135	51	59
65	2-1/2	280	330	562	446	300	-	-	-	785	670	200	100	167	58	70
80	3	310	356	630	483	300	-	-	-	902	756	508	110	196	84	100
100	4	350	406	735	562	350	-	-	-	1007	835	508	121	242	137	165
150	6	450	495	956	720	350	1096	805	305	1216	848	305	160	380	210	240
200	8	550	597	1150	856	400	1290	941	305	1440	1013	305	187	462	340	385
250	10	650	673	1439	1013	500	1580	1098	305	1728	1170	305	230	545	505	565
300	12	750	762	1545	1155	600	1705	1250	458	1833	1312	305	265	660	680	765
350	14	850	826	1817	1313	650	1977	1408	458	2131	1480	305	292	705	1010	1130
400	16	950	902	1965	1445	700	2125	1540	458	2278	1610	305	320	792	1430	1580
450	18	1050	978	2295	1560	800	2525	1700	458	2655	1741	457	358	878	1940	2120
500	20	1150	1054	2452	1655	1000	2682	1795	458	2812	1936	457	396	963	2500	2750
600	24	1350	1232	-	-	-	3186	2235	458	3356	2413	610	468	1287	3710	4050
700	28	1450	1397	-	-	-	-	-	-	3902	2777	610	500	1375	5100	5700
800	32	1650	1651	-	-	-	-	-	-	4393	3121	610	556	1507	6920	7547
900	36	1880	1880	-	-	-	-	-	-	4863	3428	760	600	1650	9800	10600

Note: * TIAN'ERTONG electric device, with models to users' requests.

** The weight listed is that of polished rod, no diversion hole and not including drive unit.

PARALLEL SINGLE DISC GATE VALVE

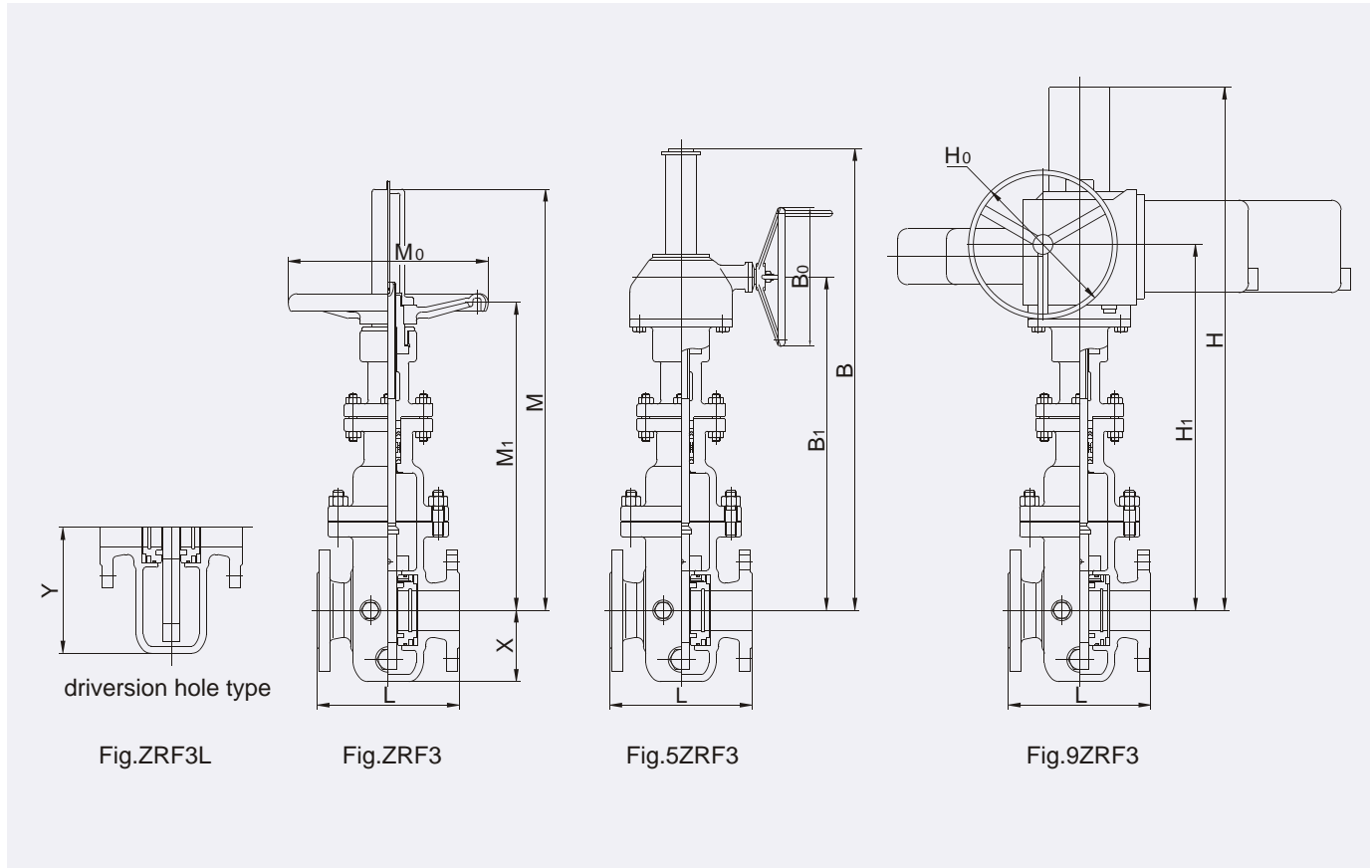


Fig.ZRF3L

Fig.ZRF3

Fig.5ZRF3

Fig.9ZRF3

Main Dimensions & Weight

CLASS400

Size		L(RF)	L(BW)	Manual Operated			Gear-driven			Electric			X	Y	Weight(kg)	
mm	in.			M	M ₁	M ₀	B	B ₁	B ₀	H	H ₁	H ₀			BW	RF
25	1	216	216	295	230	200	-	-	-	-	-	-	66	100	-	-
32	1-1/4	229	229	368	285	200	-	-	-	-	-	-	77	116	-	-
40	1-1/2	241	241	457	352	250	-	-	-	-	-	-	83	127	-	-
50	2	292	292	499	378	250	-	-	-	723	601	200	88	135	51	59
65	2-1/2	330	330	562	446	300	-	-	-	785	670	200	100	167	58	70
80	3	356	356	630	483	300	-	-	-	902	756	508	110	196	84	100
100	4	406	406	735	562	350	-	-	-	1007	835	508	121	242	137	165
150	6	495	495	956	720	350	1096	805	305	1216	848	305	160	380	210	240
200	8	597	597	1150	856	400	1290	941	305	1440	1013	305	187	462	340	385
250	10	673	673	1439	1013	500	1580	1098	305	1728	1170	305	230	545	505	565
300	12	762	762	1545	1155	600	1705	1250	458	1833	1312	305	265	660	680	765
350	14	826	826	1818	1313	650	1977	1408	458	2131	1480	305	292	705	1010	1130
400	16	902	902	1965	1445	700	2125	1540	458	2278	1610	305	320	792	1430	1580
450	18	978	978	2295	1560	800	2525	1700	458	2655	1741	457	358	878	1940	2120
500	20	1054	1054	2452	1655	1000	2682	1795	458	2812	1936	610	396	963	2500	2750
600	24	1232	1232	-	-	-	3186	2235	458	3356	2413	610	468	1287	3710	4050
700	28	1397	1397	-	-	-	-	-	-	3902	2777	610	500	1375	5100	5700
800	32	1650	1650	-	-	-	-	-	-	4393	3121	610	556	1507	6920	7547
900	36	1880	1880	-	-	-	-	-	-	4863	3428	760	600	1650	9800	10600

Note: * TIAN'ERTONG electric device, with models to users' requests.

** The weight listed is that of polished rod, no diversion hole and not including drive unit.

PARALLEL SINGLE DISC GATE VALVE

Main Dimensions & Weight

CLASS600 PN10.0

Size		L(RF)	L(BW)	Manual Operated			Gear-driven			Electric			X	Y	Weight(kg)	
mm	in.			M	M ₁	M ₀	B	B ₁	B ₀	H	H ₁	H ₀			BW	RF
25	1	216	216	295	230	200	-	-	-	-	-	-	66	100	-	-
32	1-1/4	229	229	368	285	250	-	-	-	-	-	-	77	116	-	-
40	1-1/2	241	241	457	352	250	-	-	-	-	-	-	83	127	-	-
50	2	292	292	499	378	300	-	-	-	723	600	200	88	135	59	68
65	2-1/2	330	330	562	446	350	-	-	-	821	705	508	100	167	78	90
80	3	356	356	630	483	350	-	-	-	890	742	508	100	196	106	122
100	4	432	432	735	562	400	-	-	-	995	690	305	121	242	134	167
150	6	559	559	956	720	500	1096	805	305	1245	876	305	160	380	212	260
200	8	660	660	1150	856	600	1290	941	305	1444	1013	305	187	462	384	484
250	10	787	787	1439	1013	650	1580	1098	458	1753	1199	305	230	545	540	720
300	12	838	838	1545	1155	700	1705	1250	458	1858	1320	305	265	660	965	1160
350	14	889	889	1817	1313	800	1977	1408	458	2177	1495	457	292	705	1305	1620
400	16	991	991	1965	1445	1000	2125	1540	458	2365	1762	610	320	792	1350	1800
450	18	1092	1092	-	-	-	2525	1700	458	2695	1877	610	358	878	1950	2440
500	20	1194	1194	-	-	-	2682	1795	458	2922	2030	610	396	963	2365	2985
600	24	1397	1397	-	-	-	-	-	-	3426	2470	610	468	1287	3800	4740
700	28	1549	1549	-	-	-	-	-	-	3983	2835	760	500	1375	5930	6800
800	32	1778	1778	-	-	-	-	-	-	4485	3186	760	556	1507	8333	9410

CLASS900 PN16.0

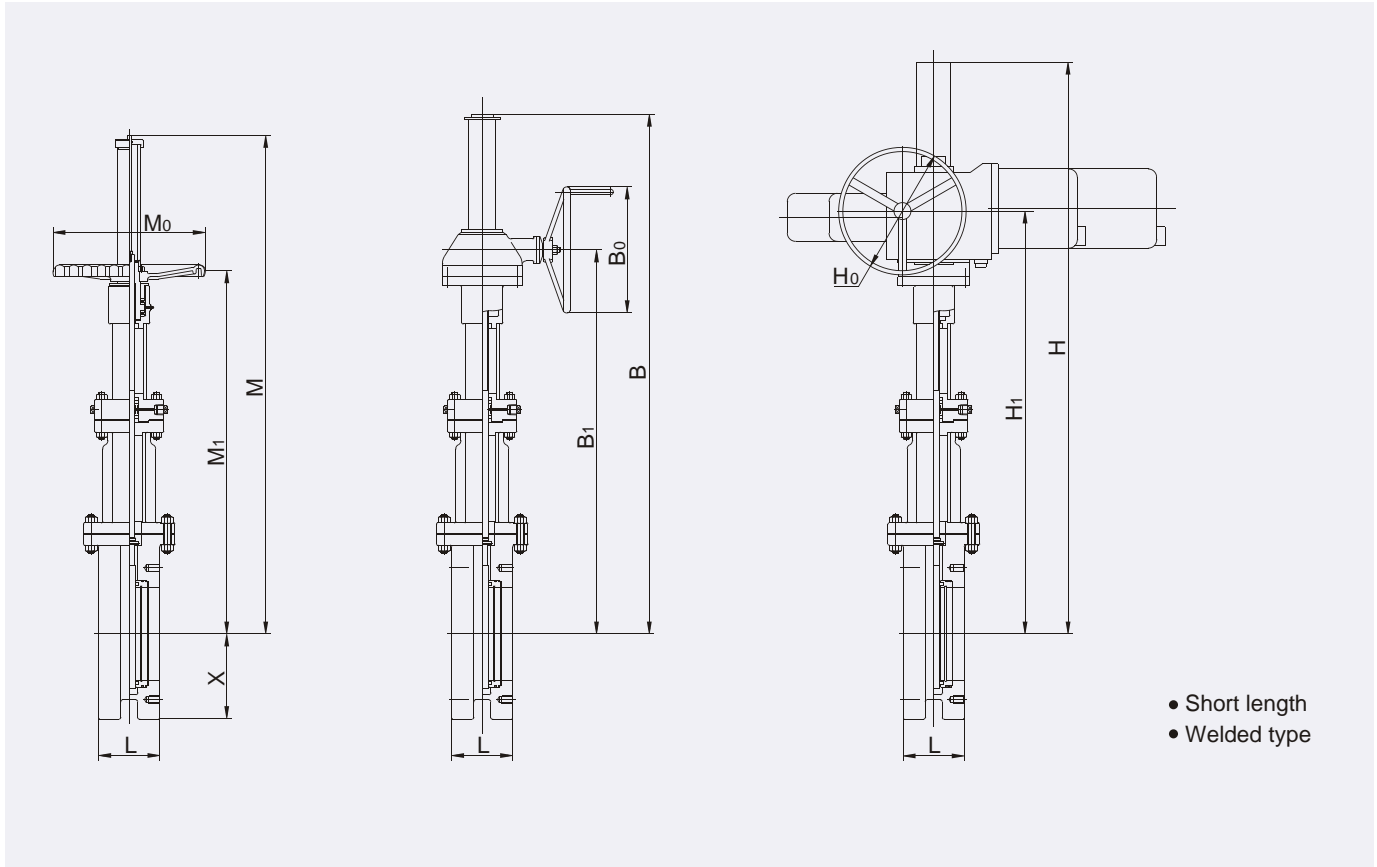
Size		L(RF)	L(BW)	Manual Operated			Gear-driven			Electric			X	Y	Weight(kg)	
mm	in.			M	M ₁	M ₀	B	B ₁	B ₀	H	H ₁	H ₀			BW	RF
25	1	254	254	325	253	250	-	-	-	-	-	-	73	100	-	-
32	1-1/4	279	279	405	312	300	-	-	-	-	-	-	85	128	-	-
40	1-1/2	305	305	503	387	300	-	-	-	-	-	-	91	140	-	-
50	2	368	368	550	416	350	-	-	-	809	545	305	97	147	-	-
65	2-1/2	419	419	618	491	400	-	-	-	877	620	305	110	184	-	-
80	3	381	381	693	531	500	833	616	305	982	688	305	121	216	-	-
100	4	457	457	810	618	600	950	703	305	1098	775	305	133	266	-	-
150	6	610	610	1052	791	650	1212	886	458	1366	957	305	176	418	421	443
200	8	737	737	1263	942	700	1423	1037	458	1577	1108	305	206	508	672	707
250	10	838	838	1583	1136	800	1813	1276	458	1943	1318	457	255	600	983	1034
300	12	965	965	1698	1271	1000	1928	1411	458	2058	1453	457	290	726	1634	1720
350	14	1029	1029	-	-	-	2230	1585	458	2400	1762	610	321	775	2353	2476
400	16	1130	1130	-	-	-	-	-	-	2630	1963	610	351	871	2613	2750
450	18	1219	1219	-	-	-	-	-	-	2993	2090	610	395	966	3575	3763
500	20	1321	1321	-	-	-	-	-	-	3147	2168	760	436	1060	4331	4559
600	24	1549	1549	-	-	-	-	-	-	3706	2655	760	515	1416	6954	7320

Note: * TIAN'ERTONG electric device, with models to users' requests.

** The weight listed is that of polished rod, no diversion hole and not including drive unit.

PARALLEL SINGLE DISC GATE VALVE

Pressure:CLASS150/PN1.6~2.5



Main Dimensions & Weight

CLASS150 PN1.6、2.5

Size		L ^(RF)	Manual Operated			Gear-driven			Electric			X	Weight(kg)
mm	in.		M	M ₁	M ₀	B	B ₁	B ₀	H	H ₁	H ₀		
100	4	150	700	535	350	-	-	-	960	795	508	110	16
150	6	150	910	685	350	-	-	-	1170	945	508	145	32
200	8	180	1095	815	350	1235	900	305	1355	1075	508	170	37
250	10	180	1370	965	450	1510	1050	305	1630	1095	305	210	76
300	12	200	1470	1100	500	1610	1185	305	1730	1230	305	240	105
350	14	206	1730	1250	600	1890	1345	458	2020	1417	305	265	150
400	16	218	1870	1375	650	2030	1470	458	2160	1532	305	290	288
450	18	218	2185	1485	700	2415	1625	458	2500	1651	305	325	328
500	20	229	2335	1575	800	2565	1715	458	2650	1741	305	360	425
600	24	248	2815	1995	1000	3045	2135	458	3130	2161	457	425	491
700	28	286	-	-	-	-	-	-	3660	2470	457	455	-
800	32	286	-	-	-	-	-	-	4135	2933	610	505	-
900	36	286	-	-	-	-	-	-	4605	3260	610	545	-
1000	40	324	-	-	-	-	-	-	5140	3645	610	610	-

Note: * TIAN'ERTONG electric device, with models to users' requests.
** The weight listed is that of polished rod, not including drive unit.